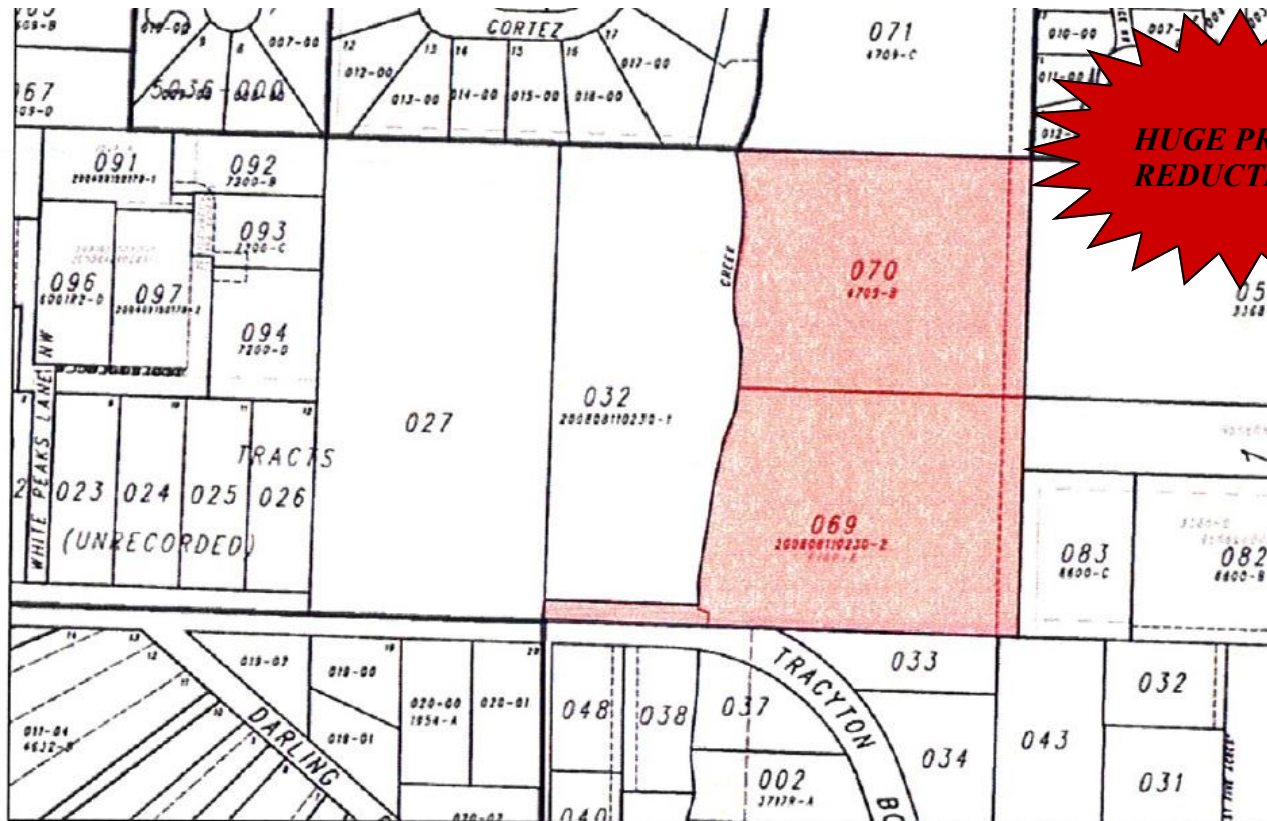


REO LAND FOR SALE, 2 LOT OPPORTUNITY!
 6394 & 6398 TRACYTON BLVD. BREMERTON, WA
\$125,000

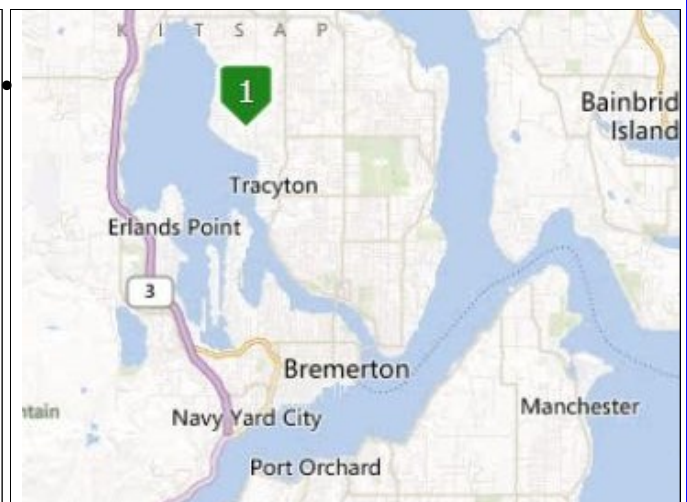


HUGE PRICE REDUCTION!

Plat Map

PROPERTY HIGHLIGHTS

- 6.51 ACRE ASSEMBLAGE
- OPERATING WELL ON UPPER PARCEL
- PREVIOUSLY USED AS SINGLE FAMILY RESIDENCES ON SEPTIC SYSTEMS
- BOTH LOTS SOLD TOGETHER.
- BUYER TO DO OWN DUE DILIGENCE
- BANK FORMS TO BE USED ON ALL OFFERS
- PROPERTY IS SOLD "AS IS"
- BARLOW ESCROW, EVERETT
- PACIFIC NW TITLE, SILVERDALE
- NWMLS #506970; CBA #531206



FOR MORE INFO SEE
WWW.COAKLEYDEVELOPMENT.COM

JOE COAKLEY
 206.979.0693
 JOSEPHCOAKLEY@MSNCOM

BUILDER AND DEVELOPER
 LAND SERVICES



*INFORMATION DEEMED RELIABLE. BUYER TO VERIFY.