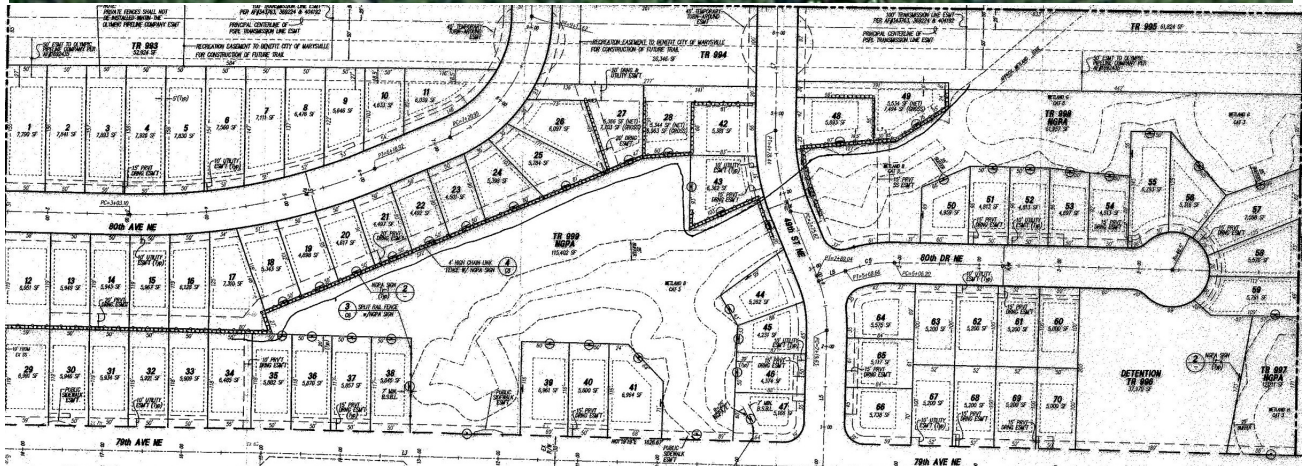


For Sale - 70 Lot Partially finished plat Harvest Hills - Marysville

**HUGE PRICE
REDUCTION!**



Details

- Partially graded site for 70 lot plat with some improvements installed.
- Zoned R-7200; **6055 sf average lot size, most lots 50 wide X 115 ft. deep**
- Fully engineered and approved civil engineering plans.
- City of Marysville jurisdiction including water and sewer.
- Project is approximately 20.10 acres with 141,160 sf of open space, adjacent to Deering Wildflower Acres Park, **Lake Stevens School District**
- Assessor's parcel #005900700010600, 005907000011100, 00590700013000, 0590700013500, 005907000015400

NWMLS# 208244

CBA #487259

\$490,000 \$7,000 per lot!

For More info See

www.coakleydevelopment.com

Builder and Developer Land Services



Joe Coakley
206.979.0693
josephcoakley@gmail.com
www.coakleydevelopment.com