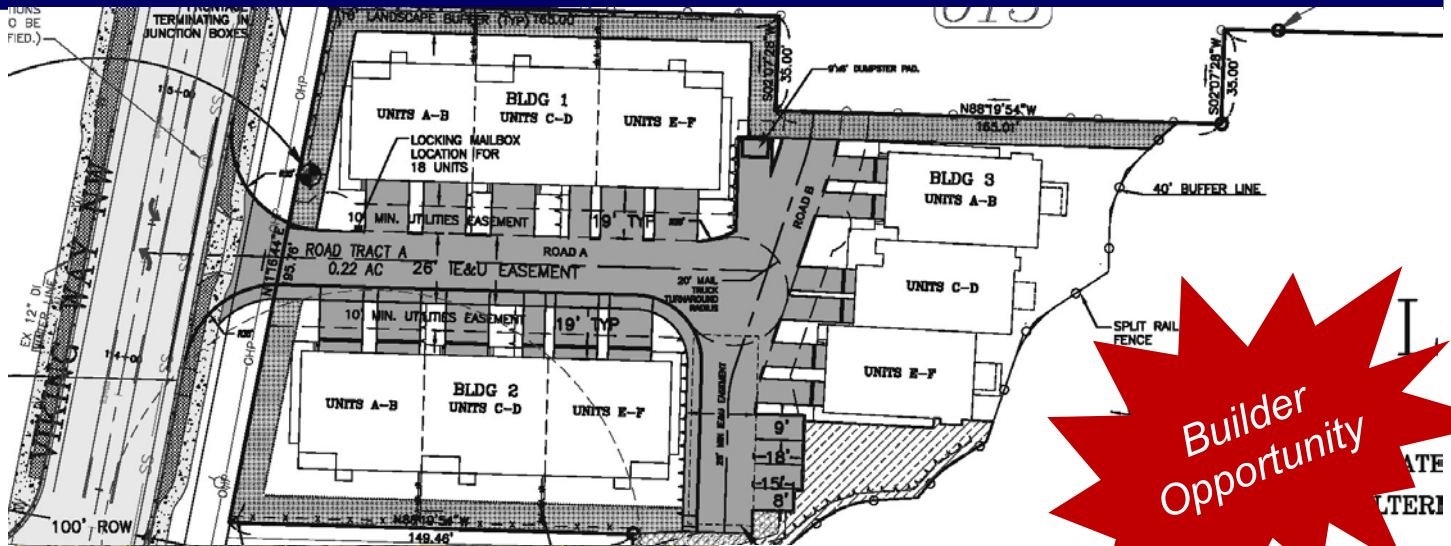


For Sale - 19 unit PUD
Substantially Engineered /Raw Land
20946 Viking Ave NW, Poulsbo, WA



- Offering engineered & approved residential 19 unit PUD in Poulsbo, WA.
- 18 multifamily units and 1 single family lot. May be used as possible apartment site.
- Some frontage improvements complete including sewer stub and ROW.
- Located close to SR Hwy 3 and downtown Poulsbo
- This is an REO property. Buyer to do own due diligence.
- Please do NOT disturb resident in occupied home which is not part of sale.

\$225,000

For More info See

NWMLS#194902

www.coakleydevelopment.com

Builder and Developer Land Services

Joe Coakley

206.979.0693

Josephcoakley@msn.com

www.coakleydevelopment.com

