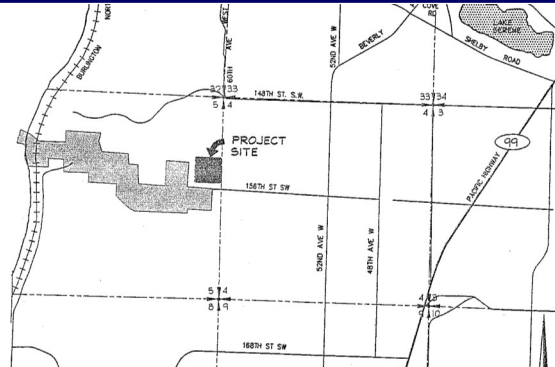


55 LOT LDMR PLAT ARBUTUS GARDENS, EDMONDS, WA



PROPERTY DETAILS

- Approved site for 55 lot LDMR lots, Snohomish County
- #04-119124-000-00-LU, Alderwood Water and Sewer District
- Fully approved civil engineering plans with grading permit.
- Tax parcel #005131-000-016-01; Located next door to 6025 156th Ave SW, Edmonds
- Project is approximately 9.11 acres and includes adjacent parcel (expired short plat 60th Ave West) #00513100000903 with no entitlements for possible additional yield of 8 more LDMR lots. REO property sold "As is".
- Edmonds school district. Buyer to do own due diligence.

\$670,000/ \$12,182 per lot

For More info See

NWMLS# 226163

www.coakleydevelopment.com

Builder and Developer Land Services



Joe Coakley
206.979.0693
josephcoakley@gmail.com
www.coakleydevelopment.com